

# ANNUAL REPORT

WELTWEIT - SOCIETY FOR THE  
PROMOTION OF LOCAL INITIATIVES

2025





**“The most dangerous worldview is the worldview of those who have never looked at the world.”**

This is said to have been stated by Alexander von Humboldt. Recently, an alumnus from Brazil — now a staff member at Weltweit — asked whether our association’s name was derived from this quote. Unfortunately, it is not, but it fits our organizational philosophy very well. In a slightly softened way, Humboldt is essentially saying that a sound analysis is difficult to achieve from a distance. We also believe that the best problem solvers are those who are very close to the problem that needs solving. Their perspective is not clouded by the lens of unfamiliar living conditions. That is where the emphasis on local initiatives in our rather unwieldy association name comes from.

An equally important element is our commitment to working with international students and alumni from those foreign countries. They contribute the (sometimes missing) technical expertise and a valuable external perspective to the project ideas of the local initiatives. Perhaps it is precisely this combination of local and international knowledge that makes our projects so successful. By now, we have supported or even helped launch more than 20 projects, and so far there has not been a single one of which we would say in retrospect that we should have kept our hands off it, or that it wasted more resources than it produced benefits.

With something as complex as the development of a region or a society, 20 cases are not enough to speak of a general rule. But our confidence is growing that we have chosen the right approach, and I hope the following reports can give a vivid impression of this.

Enjoy reading.



# Content

---

1. GAERS in Nigeria
2. PAANI in Nepal
3. Sustainability Week Pakistan
4. SACHA Project - Phase II, Bolivia
5. Matutuine Bamboo Park, Mozambique
6. Focus Bamboo II - DAAD Alumni Seminar in Mozambique
7. KECA in Tanzania
8. ESA Saline Agriculture Network
9. Pathways to Joyful Integration
10. Blue Economy Lab - Germany, Spain, Colombia, Chile
11. Analog Forestry Project, Peru
12. Online Workshops and Courses
13. Action Network Worldwide
14. Finances
15. Outlook into 2025
16. Acknowledgment



## Integration of Local Farm Production with School Feeding Programs by PAANI

**PAANI**, a Nepal-based NGO founded by returnees from German universities, has made significant strides in connecting **local organic farmers** with the mid-day meal program at Kalidhunga School in **Dolakha**. Launched in 2024 and expanded in 2025, the project aimed to provide students nutritious, locally sourced organic meals while empowering farmers to access a **reliable market for their produce**. In 2025, the project focused on reinforcing the farm-to-school linkages, improving meal quality for students, and building the capacity of farmers to sustain organic production. Through this collaboration, students now receive fresh, locally grown meals, while farmers benefit from a steady, fair-market system for selling their crops.

The project has not only improved the quality of meals but also encouraged greater **community engagement**. Regular **workshops** and **hands-on activities** in the school garden helped boost awareness about organic farming and healthy eating. This has led to increased acceptance of nutritious meals among students, parents, and teachers. Farmers have also gained significant support through targeted training programs and agri-input assistance, enabling them to increase production. Furthermore, a functional market link was established, where **farmers supply fresh vegetables** at agreed prices, ensuring both **fair compensation** and **healthy meals for students**.



Despite the positive outcomes, the project faced few key challenges that impacted its full potential. The fixed government meal budget of NPR 20 per student, which had not kept pace with inflation, limited the school's ability to diversify meals and regularly purchase local produce. Farmers also struggled with pest and disease outbreaks, high input costs, and a lack of early pest management support. On top of that, the school's dependence on firewood and LPG for cooking led to **high energy costs** and created environmental and health concerns.

To address these challenges, the project's second phase introduces key strategies to ensure its **long-term success**. The shift to electric cooking in the school kitchen is a cornerstone of this strategy, aiming to reduce energy costs by at least 40%, while also improving safety and **reducing environmental impact**. A Plant Clinic and Integrated Pest Management system will be set up to support farmers with early pest diagnosis and climate-resilient practices, further improving farm productivity. Additionally, local government co-funding and the development of a clear business plan that defines pricing, cost-sharing, and reinvestment of savings will strengthen the project's financial sustainability.



Looking ahead, **PAANI** is positioned to create a scalable, circular food-energy system that integrates energy savings, improved farm productivity, and nutritious meals. The success of the initiative lies in strong institutional partnerships between the school, farmers, and local government, fostering ownership and ensuring the sustainability of the project. Through these collective efforts, **PAANI** is committed to achieve "Nurturing young minds, empowering communities, and transforming lives – **one meal at a time!**"

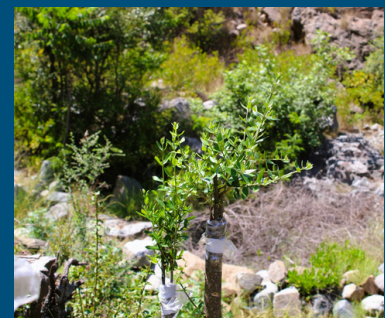


## Sustainability Week Pakistan – Annual Report 2025

### Driving Locally Led Climate Action, Green Jobs, and Community Resilience

In 2025, **Sustainability Week Pakistan (SWP)** experienced a year of meaningful progress, marked by the completion of a major community initiative, the launch of a new green enterprise, and sustained engagement on global climate platforms. Across its work, **SWP** remained focused on advancing locally led **climate action, green job creation, and long-term community resilience**, while strengthening its institutional capacity and partnerships.

A central achievement of the year was the successful completion of the two-year flagship project, **Harvesting Hope: Green Job Creation for Sustainable Development in District Dir Lower, Pakistan**. Through this initiative, SWP supported the development of an olive-based green economy by mobilizing local communities and strengthening climate-smart agricultural practices. The project led to the establishment of four Community-Based Organizations, the delivery of olive grafting trainings to sixty farmers, and the improvement of local production systems through nursery development. By the end of the project period, 11,000 olive saplings had been planted, 30,000 wild olive trees grafted, and 200 liters of extra virgin olive oil produced—demonstrating early commercialization and new livelihood opportunities for rural households and youth.



Building on this foundation, SWP launched **Ecolivia** in 2025 as a sustainable agriculture and green enterprise initiative aimed at strengthening farmer skills, promoting climate-resilient value chains, and improving market access. Ecolivia's community-produced extra virgin olive oil gained visibility in Pakistan's local market during its first year and began attracting interest from investors and partners, positioning SWP as an emerging catalyst for rural green entrepreneurship and inclusive economic growth.

Alongside its field and enterprise work, SWP expanded its advocacy and knowledge-sharing efforts by representing Pakistan at major international platforms. These included the **ChangeNOW Summit** in Paris, the **UNDRR Global Platform for Disaster Risk Reduction** in Geneva, the **Bonn Climate Conference**, **Tropentag**, **COP30** in Belém, the **Impact Festival** in Frankfurt, and **UNEA-7**. Across these forums, SWP consistently highlighted the importance of community-led climate adaptation, inclusive resilience-building, and increased financing for locally driven solutions in climate-vulnerable contexts.

Looking ahead, 2025 stands as a milestone year that strengthened SWP's strategic direction and global visibility. As the organization moves into 2026 and beyond, it remains committed to scaling green job creation, strengthening rural value chains, advancing climate adaptation through local leadership, and building long-term global partnerships that **support a resilient, inclusive, and sustainable Pakistan**.



## Building SACHA Phase II - Strengthening Partnerships

**SACHA** project continues as a nature-based education initiative focused on promoting environmental awareness and outdoor education for children.



This year, the project SACHA received a small grant from the Transfer-to-Action Fellowship, awarded during the 90th CIPSEM Course at TU Dresden. This support strengthened our understanding of the value of collaboration and highlighted the importance of working alongside organizations that share similar environmental goals. As a result, SACHA officially integrated SDG 17 – Partnerships for the Goals, recognizing cooperation as a key factor for impact and growth.

At the beginning of the year the project SACHA established a meaningful partnership with Bolivia Construye, allowing our participation in the 3rd Interuniversity Course on Strengthening Youth Leadership, where the program was presented in online sessions.

As a result, the project connected directly with a local initiative that also works with environmental education.

Together, we participated in university fairs with an interactive booth, and continued providing outdoor environmental education experiences to children from schools previously involved in the project



Another positive milestone this year is the partnership with **Hagamos Composta (Mexico)**. Through this collaboration, we are joining efforts to offer composting services in our city that will help reach broader communities and promote not only better solid waste management, but also our outdoor environmental education program for children. As a team we look forward to the possibility that this may potentially contribute to the financial sustainability for the children's outdoor program in the future.



For the project, 2025 has been a year of growth, collaboration, and consolidation of a strong, dedicated team - mostly led and shaped by women.



## Matutuine Bamboo Park



The **Bamboo Park** project is a showcase initiative aimed at rehabilitating degraded land in the Matutuine District through bamboo-based agroforestry systems that restore ecosystems, improve soil quality, and support local livelihoods. The degradation of the project area is mainly due to soil extraction for the construction of the Maputo–Ponta do Ouro highway, which left the land compacted and unsuitable for productive use. In response, the project applies **nature-based solutions that combine bamboo, endemic tree species, and food crops to rehabilitate the area.**

In 2025, following formal authorization from **APAM** (Maputo Conservation and Protection Areas) and with the full support of community leaders and local government authorities, the project transitioned from planning to active implementation, allowing rehabilitation activities to begin. During the year, 5 hectares of the total 16-hectare site were planted with bamboo and endemic tree species, with planting ongoing. This initial phase focused on soil stabilization, erosion control, and establishing the foundation for a resilient agroforestry system adapted to local conditions.



A learning visit to ASSAMBA's bamboo farm helped participants better understand how bamboo-based agroforestry systems develop over time. Additional training focused on bamboo charcoal, briquette, and biochar production, as well as the correct application of biochar to improve soil fertility, linking environmental restoration with income-generating opportunities. At the same time, long-term planning for the Bamboo Park advanced through collaboration with RheinMain University of Applied Sciences. Architecture students and professors, supported by Paulino Botao, began developing a draft land occupation and master plan to guide the future use of the park, including community and research facilities, small-scale commercial spaces, and supporting infrastructure.



**Partnerships** continued to grow throughout 2025. **UN-Habitat** signed a Memorandum of Understanding, IOM supported activities for the second time, and **INGD** participated in the third international workshop. Technical expertise was further strengthened through cooperation with **Eduardo Mondlane University**, Faculty of Forestry Engineering, with guidance from **Dr. Nocy Bila (PhD)** on degraded land rehabilitation. To support ongoing field activities, four additional staff members were contracted for plantation management and maintenance. Modest financial support from Rotary-Germany (€2,000) also contributed to sustaining project activities.

2025 was a foundational and highly successful year for the Matutuine Bamboo Park. The strong collaboration between communities, academic institutions, government bodies, and international partners demonstrates the potential of bamboo-based agroforestry as a scalable and effective solution for restoring degraded land and strengthening climate resilience in southern Mozambique.

- Paulino Botao -



## Focus Bamboo II - Alumni Seminar in Mosambique

In September 2025, **Welweit** returned to **Mozambique** for the second part of its **DAAD Alumni seminar** series on bamboo as a driver of sustainable development. The current project by **Paulino Botao** (Weltweit & ASSAMBA member, Hochschule RheinMain lecturer), in which a research and training centre for renewable raw materials, in particular bamboo, is being designed, serves as a case study and starting point. The objective of this seminar is to build an interdisciplinary network of well-informed bamboo experts, scholars and practitioners. Building on the momentum of the previous year, the event brought together 15 DAAD alumni of development study programs from a diverse range of countries across Africa, Asia, Latin America, and Europe. They worked together with students from HSRM and partner institutions, alongside local practitioners and community members. What made this edition particularly meaningful was the continuity: several participants from the first seminar returned, joined by new alumni, creating a learning environment shaped by shared experience and fresh perspectives alike.

The programme began in **Maputo** with a lecture hosted by the Department of Architecture at **Universidade Eduardo Mondlane**, where partners from universities, international organisations, and civil society discussed climate-resilient construction and the role of renewable materials. From there, the group moved to **Ponta do Ouro**, where theory quickly gave way to practice. In intensive daily workshops, mixed teams of alumni and students learned to select, treat, and process bamboo, applying construction techniques to build full-scale structural elements. The work was physically demanding and highly collaborative, reinforcing our belief that meaningful exchange happens most powerfully through doing. Equally important were the informal moments - shared meals, long travel days, and evening reflections, which became valuable spaces for networking and trust-building across cultures and disciplines. While our digital seminars have their own advantages, particularly in making participation accessible from many parts of the world, this experience highlighted the unique value of meeting in person, where collaboration deepens through shared experiences that cannot be replicated online.



© Tessa Hartmann / HSRM

The seminar showed that alumni initiatives can extend far beyond a single event. Returning participants took on mentoring roles, while new attendees expanded the network and brought in **fresh perspectives**. After everyone returned home, the exchange continued **online via the ANW platform**, where alumni, students, and partners now collaborate in regular virtual working groups to develop the curriculum for the planned research and training centre for renewable raw materials. This ongoing cooperation has helped translate the experiences from Mozambique into concrete next steps. For us at **Welweit**, the process underscored the **importance of continuity**: meaningful impact grows when partnerships are maintained and strengthened over time, turning short-term encounters into lasting collaboration.



## KECA - Tanzania

The year 2025 marked a major milestone for **Kibaha Environmental Conservation Action (KECA)** with the completion and operationalization of the **Kibaha Apiculture Training Centre (KBTC)**, established through a **BMZ-funded project via Weltweit e.V.** of Germany (April 2024–April 2025). The centre now serves as a knowledge hub for modern beekeeping, bamboo production, climate-smart innovation and marketing of natural products.

Following its inauguration, KECA ([www.keca.co.tz](http://www.keca.co.tz)) trained about 200 beneficiaries across the Coast Region, including beekeepers, farmers from riverine communities, women's groups and government officials. Trainings provided **practical skills** in modern hive installation, apiary management, non-destructive honey extraction, value addition and bamboo nursery development, propagation and green enterprise opportunities such as bamboo hive production, furniture making and handicrafts.



Throughout the year, KECA/KBTC participated in major national exhibitions, including the **Sabasaba International Trade Fair** and the **Nanenane Agricultural Exhibition**, to promote **Marlena Pure Natural Honey**, expand market networks and demonstrate the integration of beekeeping into crop and tree production systems such as cashew, sunflower and fruit orchards. These platforms **increased visibility** among farmers, buyers and development partners while highlighting beekeeping as both a livelihood activity and an ecological service.

In July 2025, **KECA/KBTC** joined the **Arusha Apimondia Marathon**, where the team won a medal and engaged with the Apimondia Secretariat, opening opportunities for future collaboration and international linkages. These engagements positioned KECA as an emerging contributor to regional apiculture development and strengthened its pathway to global knowledge exchange.

A key highlight was the establishment of the **KECA Women Green Economy Hub** to empower women in beekeeping, clean cooking technologies, bamboo enterprises and climate adaptation through mentorship, entrepreneurship training and market access. The initiative has generated strong community support and promotes inclusive environmental leadership and income opportunities for women.



Partnership building remained central to KECA's progress, including collaboration with **ARTS Tanzania** on nursery establishment and training programs, participation in the CLEAR Path regional clean-cooking initiative led by **Kenyatta University**, and continued technical cooperation with the **Bad Soden Beekeeping Association** (Germany). These partnerships have strengthened KECA's capacity to deliver sustainable environmental and livelihood interventions.

KECA/KBTC sincerely thanks **Weltweit e.V.**, **BMZ** and **Action Network Worldwide** for their continued trust and support, as well as the **Bad Soden Beekeeping Association** for technical collaboration. We also express gratitude to the Government of Tanzania for policy support and an enabling environment that allowed KECA/KBTC to grow and **serve communities** effectively.

- Ibrahim Hussein Mkwiru -



KIBAHA  
ENVIRONMENTAL  
CONSERVATION  
ACTION



Ursula  
Merz  
Stiftung



## ESA Saline Agriculture Network

Strengthening knowledge and action networks on Saline Agriculture in Eastern and Southern Africa

As in previous years, our network initiative on soil salinity management in Eastern and Southern Africa (ESA) facilitated extensive topical exchange along with concrete project work. Our engagement in 2025 was dominated by the wrap up of the **MoSARP** project and our collaboration with the **Berlin-Lichtenberg / Maputo-KaMubukwana** town twinning partnership, as outlined below. Furthermore, network manager **Jakob Herrmann** was able to continue extending the network's reach through conference participations (**International Salinity Conference hosted by ICAR, India**), as well as technical exchanges in the context of field trips to coastal Kenya and central Mozambique. However, what couldn't be achieved, due to a lack of time capacities of the core network team, was breathing life into the virtual networking structures on the ANW platform initiated in 2024. We hope to successfully reactivate this initiative in 2026, possibly with the help of (new) dedicated members, willing to stimulate virtual network activity through regular **community management** action. **Please reach out, if you're interested!**



### Key Projects:

#### Climate Change Adaptation of Urban Agriculture (Maputo):

A collaboration between Berlin-Lichtenberg and Maputo-KaMubukwana, supported by **ABIODES** and **Weltweit**. In 2025, ABIODES successfully implemented a series of **Farmer Field Schools**, reaching approx. 100 farmers and 10 extension workers. Some field work continues with the help of students of the University Aquila (Maputo). Another big milestone of the project was the publication of a technical manual in Portuguese on salinity management in agriculture, tailored to the conditions of Maputo's peri-urban agricultural system. The handbook is freely available via our website.

**MoSARP (Mozambique):** Funded by the **Netherlands Food Partnership** and implemented by an international consortium of seven institutions led by **Weltweit** partner **ASSAMBA**, this initiative promotes '**Saline Agroforestry**' and Saline Agriculture curriculum development by means of technical exchange and pilot field trials. The principal workshop was successfully held in February in Maputo and brought intensive technical exchange in form of presentations as well as hands-on field trial establishment in **Maputo** and **Moamba**. A special focus of the latter is the testing of different hardy bamboo and tree species under saline conditions and evaluating their potential for integration into the local production system. The trial is being continued by ASSAMBA and local partners.





## Pathways to Joyful Integration

As we approach the end of 2025, our mentorship-based integration project, 'Pathways to Joyful Integration', has achieved two key milestones:

- the drafting of a scientific paper as part of the first phase of the project, 'Needs Assessment';
- the organisation of the third symposium of Afghan refugee organisations. During this symposium, held in Düsseldorf, Germany on December 13, 2025, members of 16 organisations founded an umbrella organisation called 'Dachverband Hazara Organizations Deutschland', which is aimed at coordinating the activities of and supporting the member organisations, facilitating the smooth integration of refugees, advocating of the refugee and immigrant rights, as well as representing the interests of its members.



Our project manager, **Dr Mustafa Nasiri**, has been elected as a board member and the first president of the Dachverband. During the symposium, participants were divided into three working groups to discuss integration challenges, identity crises among immigrants and urgent issues related to changing refugee policies. They also drafted short- and medium-term plans for the Dachverband.

### Next Steps:

The scientific paper, entitled 'Roots and Routes Revisited: The Hurdles of Identity Formation among Afghan Migrants and Refugees in Germany', will be presented at a symposium organised by the Green Party in January 2026. It is currently under review and will be disseminated to all member organisations of the newly established Dachverband, as well as to relevant refugee and immigration agencies.



Additionally, the paper, which is based on qualitative research methods such as focus group discussions, will inform the design of a quantitative survey to be implemented in the first quarter of 2026. Furthermore, tailored interventions, including orientation workshops, trust-building and adaptation training, are also scheduled for 2026 and will be conducted jointly with members of the newly established umbrella organisation.





## Analog Forestry Project - Peru



Between late 2022 and early 2023, the organisations **CEARE** and **Weltweit eV.** developed the project called '**Landscape restoration in the Santo Domingo sector of the Santa Rosa de Pichanaz indigenous community**'. Thanks to this project, eight women and two men implemented the analog forestry technique on their farms with the intention of restoring them by planting various species, mainly native ones, to generate productive analog forests.

A total of 5.5 hectares were restored and more than 2,000 plants of 60 different species were planted. These plants have various uses, such as **medicinal, dyeing, food, fiber and timber production**. They are also ecologically and economically important. With this project, a nursery was set up where the vast majority of these species were propagated.

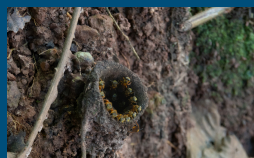
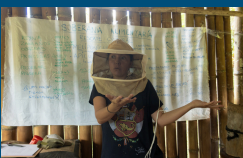


In early 2024, a year later, the project '**Vanilla with Yanasha Women**' was launched. The Yanasha women of the community, **CEARE** and the social enterprise **RUNAQ** planted Vanilla pompona orchids, a specie of native Amazonian vanilla, in the existing analog forests. In this way, the restored farms were enriched with this new specie, seeking to improve the economy of the women in the community as a medium term goal. For this project, the nursery was used to grow more vanilla plants from cuttings.

In 2024, the **International Analog Forestry Network (IAFN)** commissioned **CEARE** to produce a case study and a video to showcase its work with analog forestry. The IAFN used these materials to create a book called *Biodiversity is a Priority: Community-led Landscape Restoration applying Analog Forestry*. The book contains stories from Peru, Nepal and Uganda, as well as a comic.



The [book](#) and the [video](#) were presented at COP 16 on biodiversity in **Cali, Colombia**, and are also available in the IAFN website.



This year, community members have installed **seven specialised hives** in their homes with the help of **CEARE** for breeding native stingless bees, primarily of the *Tetragonisca angustula* specie.

By breeding these bees, the community is supporting the conservation of pollinating insects and ensuring the pollination of their own crops and those in their analog forests. This initiative also strengthens food, medicinal and economic sovereignty, which were objectives of the analog forestry project.



Due to the success of the project, **CEARE** is **seeking funding** to expand it, either by increasing existing farms with analog forests and including new beneficiaries from the same community, or by working in other communities with the same project. Similarly, the projects that CEARE has been developing are aligned with the objectives of the analog forestry project from 2022–23. Finally, we remain firmly committed to the community and to the international analog forestry network, and will continue to propose this technique as a restoration tool.

- Carolina Llerena -





## Blue Economy Lab - Germany, Spain, Colombia, Chile

In 2025, **Weltweit** e.V. continued its engagement in **BLUE-ECONOMY-LAB**, building on the foundations laid in the previous year. As an international Erasmus+ project, **BLUE-ECONOMY-LAB** connects vocational education and training (VET) with the protection and regeneration of seas and oceans. Together with our ANW partner **2811**, other partners from Europe, Colombia, and Chile, we explored through this project how education can support sustainable livelihoods and emerging forms of work linked to the Blue Economy.

Following the conceptual and partnership-building phase in 2024, the project in 2025 placed a stronger emphasis on implementation and practical application. Rather than treating green and blue sustainability as separate topics, **BLUE-ECONOMY-LAB** continued to highlight their interdependence, positioning oceans, coastal regions, and related livelihoods within a broader sustainability framework. The project aimed to strengthen skills and knowledge in these areas and to further increase the visibility of Blue Economy topics within vocational education.



### From skills assessment to action

Skills assessments in Colombia and Chile identified gaps in blue and green skills and informed the development of the Blue Economy Academy, an online training programme combining foundational knowledge with practical, collaborative work. Participants developed prototype training ideas that can be adapted to local contexts.

### Pilots, case studies, and shared learning

Selected concepts from the Academy were further developed through pilot activities and documented in a series of case studies. These illustrate practical approaches to integrating Blue Economy topics into vocational education and community initiatives.

### A strong public moment in Santa Marta

A key milestone was the International Conference on Blue Economy and Blue Jobs in Santa Marta, Colombia, which brought together educators, researchers, public institutions, and civil society organisations and received strong public and media interest. **Weltweit** e.V. was represented by Kajo Stelter, Marie Wellenbeck, and Arne Kessler and contributed organisational support as well as expert input through a workshop.

### Lasting impact and future cooperation

For **Weltweit**, the project strengthened international cooperation and the link between education, sustainability, and global learning. The materials, case studies, and partnerships developed will continue to support future work on Blue Economy topics in Latin America and beyond.

Project Website:  
[HTTPS://BLUEECONOMYLABS.COM/](https://blueeconomylabs.com/)

- Kajo Stelter -

2811





## Online Workshops and Courses

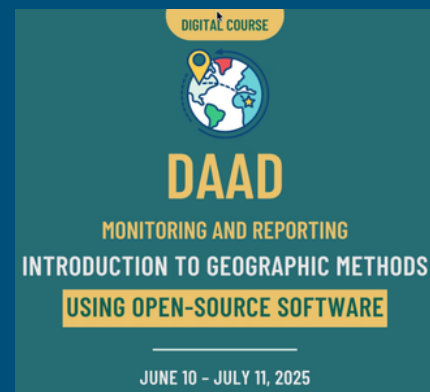
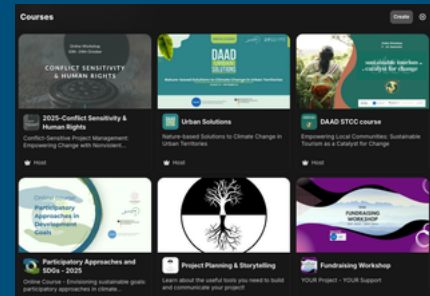
In 2025, **Weltweit e.V.** co-organised several **DAAD**-funded online workshops and courses in cooperation with partner organisations and members of the Action Network Worldwide (ANW). While the ANW platform hosted additional learning formats during the year, the activities presented here reflect the workshops directly co-organised by Weltweit and therefore included in this annual report.

The following programme addressed key challenges in sustainable and human rights-based development work. The course **Conflict-Sensitive Project Management – Empowering Change with Nonviolent Solutions**, organised by our partner **give & grow**, focused on conflict analysis, human rights compliance, and nonviolent communication, enabling participants to apply practical tools such as the “Do No Harm” framework to their own project contexts. The workshop **Intercultural Partnerships and Volunteer Management**, also organised by **give & grow**, explored intercultural sensitivity, ethical decision-making, and volunteer management in development and research cooperation.

Technical capacity building was strengthened through the five-week online training **Introduction to Geographic Methods Using QGIS**, organised together with our partner **BluoVerda**, which provided hands-on experience with open-source tools for spatial data collection, analysis, and visualisation in monitoring and reporting.

Economic sustainability formed another thematic focus. The course **Sustainable Finance and Impact Investing**, organised by **2811**, introduced sustainable business models and impact investing strategies through a project-based learning approach, supporting participants in developing real-world project ideas.

The workshop **Permaculture for Sustainable Development**, organised by Weltweit e.V. and conducted by permaculture expert Asmelash Dagne, introduced permaculture principles and practical approaches to designing resilient systems that integrate human and environmental well-being. Following the successful implementation of the course as a self-financed participant programme in 2024, Weltweit applied for DAAD funding in 2025 to make the course accessible to a larger group of participants.

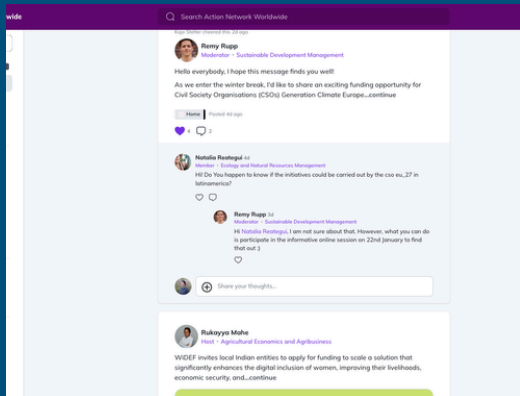


Deutscher Akademischer Austauschdienst  
German Academic Exchange Service



## ANW Platform Report - Strategic Highlights for Organizers

In 2025, **Action Network Worldwide (ANW)** strengthened its role as a trusted global learning and collaboration platform. Platform metrics and community feedback indicate that ANW has reached a stage where structured learning offers — including paid courses — are both feasible and **strategically necessary** to sustain engagement, deepen impact, and support **long-term sustainability**.



ANW grew from **900 members in January 2025 to 1,204** by December (+34%). Trust in the platform is reflected in the fact that **72% of new members** joined through referrals. During peak periods, ANW sustained **230–249 active members** per month, providing a sufficient base for recurring learning activities. Engagement was highest in guided formats such as webinars and facilitated discussions. Between June and September, over half of active members contributed, and **41% of monthly active users** returned weekly.

This indicates strong demand for participatory, multi-week, and cohort-based learning rather than one-off events.

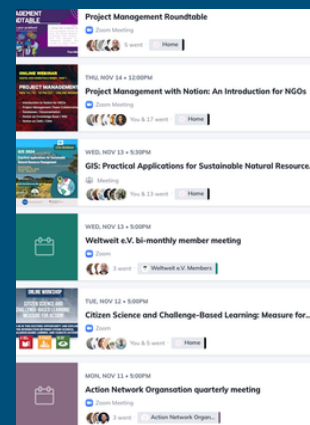
### Community Poll: Key Insights

A short poll conducted in October 2025 in the **Vacancies, Grants & Scholarships space** — one of ANW's most active areas — further clarifies member needs. With 1,189 total members and 70 active users at the time, poll participation ranged from 29% to 47% of active members, signalling strong engagement.

Results show that members primarily value **jobs/fellowships and grants**, followed by **scholarships**, while training remains undersupplied. Although around 70% of respondents had applied or planned to apply for opportunities, 47% applied unsuccessfully or did not apply despite finding opportunities relevant. This points to clear skills and confidence gaps, particularly in proposal writing, CV and profile development, opportunity identification, project design, grant writing, entrepreneurship, and navigating development-sector career pathways. Notably, 80% rated the opportunity-sharing space as useful, reinforcing ANW's role as a trusted professional resource.

After September, engagement declined: contributing members fell from 58% to 27%, and monthly active users dropped from 249 to 168, then to 52 in early December. This pattern suggests engagement is strongest when supported by structured programming and learning cycles, and weakens in their absence. Paid courses offer a mechanism to maintain **consistent programming**, predictable engagement, **expert collaboration**, and sustainable revenue.

ANW's 2025 data highlights a clear opportunity: a trusted, growing community with strong engagement in structured learning and unmet skills needs. Introducing paid courses in 2026 is a strategic, evidence-based step to meet member demand while strengthening ANW's **long-term impact** and sustainability.



- Rukayya Mahe -



## Finances

Account balance 1 January 2025 with project funds and contributions from the previous year	119581.92 €	
	received in 2025	spent in 2025
Project related funds in 2025 from foundations, institutions and companies	201533.03 €	264815.93 €
Weltweit staff costs paid from project funds		14369.32 €
Membership fees and donations	15135.86 €	
Income from special-purpose operations	0 €	
Cost sharing by partner organisations of shared software and Action Network promotional materials and community management	1970.56 €	
Administrative expenses for website, insurance, software, bank, tax advice		15608.27 €
Retained administrative shares of subsidies and project funds	11626.06 €	
Domestic/foreign travel expenses		0 €
Weltweit staff costs in total		27699.03 €
Project funding from own resources		929.96 €
Sum	347876.87 €	294683.87 €
Account Balance 31.12.	53193.00 €	



## Outlook into 2026

Last year, the time had finally come: we hired two employees on a permanent basis. Although only part-time, they receive all social security contributions and a proper employment contract. Until now, everyone has only been paid on a project basis for their hard work, with most of the hours being done on a voluntary basis. Volunteer work will always be a part of this project, but in the long run, an organization cannot continue to grow like this—and we need to grow because our world needs solutions.

This was made possible by the larger, more substantial projects from the EU programs. The Blue Economy Erasmus+ project received €157,000 in funding in its first year, of which only about €30,000 was earmarked for Weltweit, but that was enough to provide planning security for staffing for an entire year.

It makes an enormous difference when you can pay people for their work. Actually, we should all work for free, nothing is more beautiful, but this utopia will probably take a while before we can afford it. Therefore, in 2026, we will delve a little further into the EU programs and focus more on their project and funding opportunities. Unfortunately, this may also mean that we will have less time for the small initial projects of alumni, which we have made it our mission to realize. This is compounded by the fact that the DAAD no longer distributes seminar funding to associations, but only to universities. These workshops with students and alumni of development policy-oriented degree programs (EPOS) usually marked the beginning of cooperation between us and the alumni.

We do not want to deviate from this in the coming year. But when times change, we will probably have to develop a different strategy with new partners.

## Acknowledgement

On behalf of local initiatives on four continents, we would like to express our sincere gratitude to the many individuals and institutions at home and abroad for their support and cooperation. This time, we would like to extend a special thank you to the European Commission for its funding programs. There is a lot of criticism about the EU being a bureaucratic monster. So far, I find this description unjustified. Dealing with the EU does involve a lot of directives, but in other respects it is very straightforward. Above all, the friendliness and quick support we received from Brussels when we had questions made up for all the reading and writing of forms and applications. There seems to be a great deal of humanity there, and I believe we can be proud of our European government.

Thank you!  
Kajo Stelter  
Team Weltweit

Donations are tax-deductible:

Verein Weltweit – Gesellschaft zur Förderung lokaler Initiativen e.V.

**GLS Bank**

**IBAN: DE45 4306 0967 6033 4811 00**

**BIC: GENODEM1GLS**

Support Paulino's bamboo project in Mozambique by buying a ticket for Climacllic, the climate lottery:



Support Mohamed's solar project in Sierra Leone by buying a ticket for Climacllic, the climate lottery:



Donate through **Paypal:**



**Weltweit - Gesellschaft zur Förderung lokaler Initiativen e.V.**

<https://welt-weit.org/>

